



DA400 Airbrush



ASSEMBLY AND OPERATION MANUAL

Thank you for purchasing the Model Maker™ DA400 airbrush. This manual contains the instruction you need to use and maintain your new airbrush. Read over this manual thoroughly before operating the Model Maker airbrush.

SAFETY PRECAUTIONS

- Never spray near an open flame.
- Always wear an adequate respirator when using the paint gun.
- Always spray in a well ventilated area.
- Never spray near an item where overspray can get on them and cause damage.
- Always properly maintain you paint gun to achieve optimal performance and extended life of the paint gun.
- Never allow children to use the paint gun without adult supervision.
- Always properly dispose of excess paint in the proper location.
- Always use caution when handling the needle. It is extremely sharp and easily damaged.
- Always shut off the air source before disconnecting the air hose.
- Always disconnect the air hose from the air source before disconnecting it from the paint gun.

OPERATION

Remove the DA400 airbrush from the plastic storage case. Thread the small end of your airbrush hose onto the bottom of the airbrush. Attach the other end of the hose to the air source (air compressor/propellant). Make sure the hose is securely installed at both ends to prevent air leaks. If attaching to an air compressor, set the regulator between 25 and 40 psi depending on the type of paint that you are using. This is a general starting point and will vary from paint to paint. You will have to find the psi setting that works best for you and your paint.

Remove the color cup from the plastic storage case and install it onto the body of the airbrush. Make sure it is securely in place to prevent it from falling off during use. Add the desired paint to the color cup.

Gently press the airbrush trigger down. This regulates how much air is being sprayed through the airbrush. With the trigger slightly compressed, gently start to pull back on the trigger. You should start to notice paint beginning to spray out of the airbrush.

You should practice with the airbrush on a scrap piece of paper or cardboard. Make various strokes with the airbrush, varying the amount of air and paint being sprayed. This will help you achieve the desired spray pattern.

For small, thin lines, use more air and less paint, holding the airbrush slightly closer to the surface. To achieve larger lines, add more paint with the air.

CHANGING COLORS

To change colors while using the color cup, simply drain the excess from the color cup into an acceptable container. Then remove the color cup from the airbrush and wash it out using airbrush cleaner or lacquer thinner. Again, this depends on the type of paint being used. Flush the remainder of the previous color out of the airbrush using the necessary cleaner. Reinstall the color cup onto the airbrush and pour in the new color.

MAINTENANCE

Properly cleaning and maintaining your airbrush is vital to the continued consistent performance of the airbrush. The airbrush must be thoroughly cleaned out after each use to prevent dried paint in the passages.

BETWEEN COLORS

If you are using water based paints:

After you have finished spraying a color, you should detach the color cup and spray the remaining paint in the airbrush onto a scrap piece of paper. Then flush the airbrush out with airbrush cleaner. (Window cleaner will act as a suitable substitute.) When flushing the airbrush out, make sure to spray both fine and broad patterns, working the needle back and forth. This will help get as much of the leftover paint out as possible.

If your paint requires lacquer thinner for clean-up:

After you have finished spraying a color, you should detach the color cup and spray the remaining paint in the airbrush onto a scrap piece of paper. Then flush the airbrush out with lacquer thinner. When flushing the airbrush out, make sure to spray both fine and broad patterns, working the needle back and forth. This will help get as much of the leftover paint out as possible.

READ THROUGH THIS MANUAL BEFORE USING YOUR AIRBRUSH. IT CONTAINS IMPORTANT INSTRUCTIONS AND WARNINGS CONCERNING THE USE OF THIS AIRBRUSH.

If the buyer is not prepared to accept the liability associated with the use of this product, the buyer is advised to return it immediately in new and unused condition to the place of purchase.

AFTER EACH USE



Remove the air hose from the airbrush so that it is easier to work on. Remove the handle from the body of the airbrush.



Remove the needle locking nut from the airbrush. This should allow you to remove the needle from the rear of the airbrush assembly. Be careful not to damage the needle when removing it from the airbrush assembly.

MASKING

A good quality masking tape or Hobbico® Master Mask™ are both good masking materials. The job should be evaluated and then decide which will work best for each situation. Make sure to properly seal the masking tape down to prevent bleeds. If using Hobbico Master Mask, make sure you follow the instructions on the container. Using too little of the Master Mask will cause problems when you try to remove it.

WARRANTY

Model Maker warrants this product to be free from defects in material and workmanship for a period of one (1) year from the date of purchase. During that time, we will repair or replace, at our option, any product that does not meet these standards. You will be required to provide proof of purchase date (receipt with UPC proof-of-purchase or invoice).

If, during the one year warranty period, your Model Maker product shows defects caused by abuse, misuse, or accident, it will be repaired or replaced, at our option, at a service charge not greater than 50% of the current retail list price. Be sure to include your daytime telephone number in case we need to contact you about your repair.

Under no circumstances will the purchaser be entitled to consequential or incidental damages.

This warranty gives you specific legal rights, and you may also have other rights, which vary from state to state.

If you attempt to disassemble or repair this unit yourself, it may void the warranty.

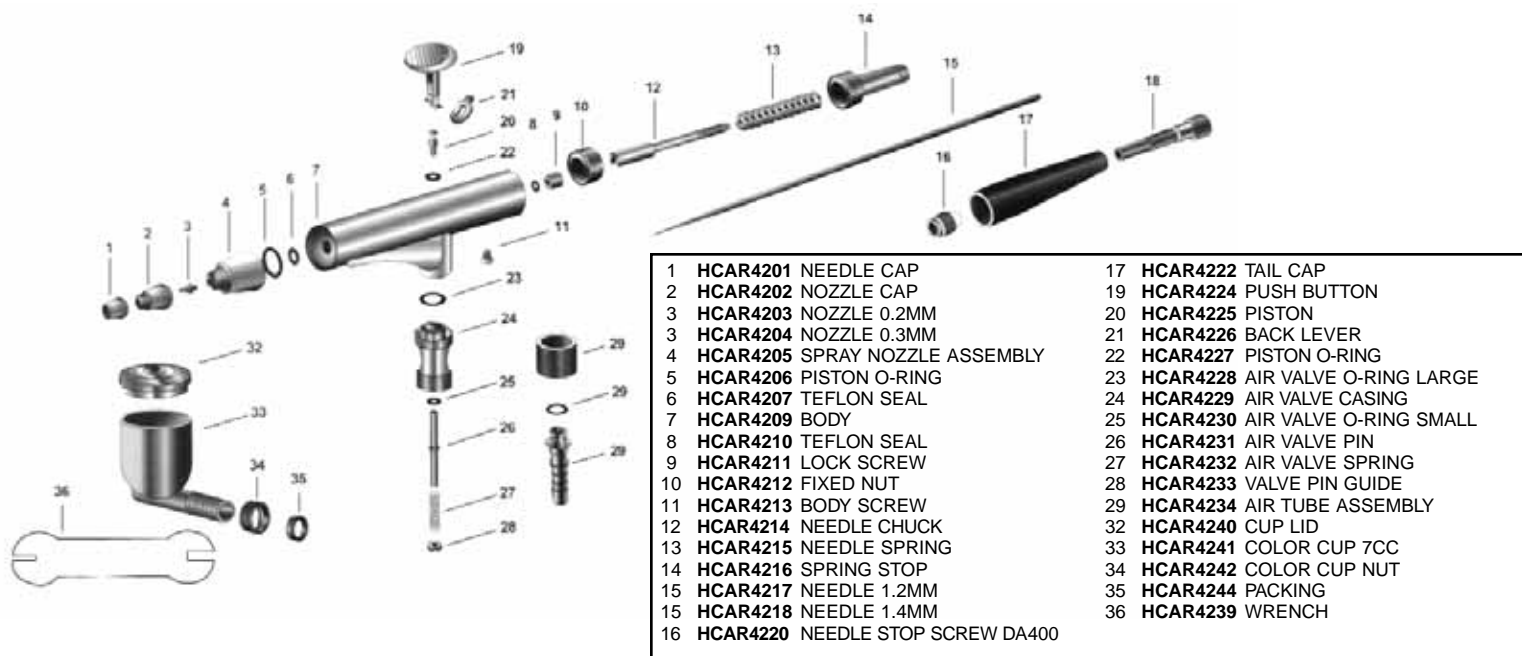
For service on your Model Maker product, either in or out of warranty, send it post paid and insured to:

Hobby Services

3002 N. Apollo Drive, Suite 1
Champaign IL 61822 USA
(217) 398-0007
www.hobbyservices.com

This warranty applies to USA and Canada only. For service in other countries, please inquire at the place of purchase. Customers residing outside the USA and Canada who wish to have service performed at our USA service center will be responsible for all postage charges.

This product contains a chemical known to the State of California to cause cancer and birth defects or other reproductive harm.



TROUBLE SHOOTING

PROBLEM: The paint gun does not spray when the trigger is pulled.

SOLUTION:

1. The paint may be too thick.
2. The PSI may be too low.
3. The paint gun may be clogged.

PROBLEM: The paint pulsates.

SOLUTION:

1. The nozzle is loose on the body.
2. The air hole in the top of the jar assembly is plugged.

PROBLEM: The trigger action is rough.

SOLUTION:

1. The needle is bent.
2. The paint gun needs cleaned.

PROBLEM: Paint bubbles in the color cup.

SOLUTION:

The paint gun is clogged.

PROBLEM: The paint sprays out grainy.

SOLUTION:

The paint is too thick. Gradually thin the paint using the proper solution.

PROBLEM: Splattering.

SOLUTION:

This is caused by letting the tip snap back into place. Always release the trigger gently.