

AirSick
SKULL 15



PAINT BY
SEAN CAHILL

STEP 1



Hi Everyone, welcome to another AirSick How-To. For this tutorial we will be using the Skull 15 stencil. We start by prepping a black panel and taping our stencil down. The first thing we need to do is establish a base for our skull. To do this we give our stencil a light dusting of white. You don't want to fill it in solid, just enough so you can see the outlines. Check out the result in step 2 after we remove the stencil. With our white we start to fill in some of the high-light areas.

STEP 2



STEP 3



STEP 4



In steps 3 and 4, we begin to fill out the skull with white. Look just above the teeth in step 3, you can see the ridges start to take shape just by adding more white. If the initial layer of white is too thick you won't be able to get this effect without black. Now that we have our first layer of highlights we move onto black to begin adding some shadows and details. Using our detail gun, we add some small cracks around the nose and eyes. In the next step we start to add some shadows under the eyes, and around the skull.

STEP 5



STEP 6



STEP 7



So now we have our first layers of white and black down. The skull is starting to look pretty good but it still needs some more work. We need a few more layers to blend everything together.

STEP 8



Adding in some more black helps to define some of the cracks and different shapes in our skull. We can really push some of the cavities and cracks by going a little heavier with the black at this stage. However, we still need to add some more white.

STEP 9



Here we begin to add some of our final highlights. These final touches are small, lightly sprayed strokes usually in the center of a highlighted area. For example on the very tips of the brow.

STEP 10



The same thing continues here, adding the highlights to the horns. Make sure that your brush strokes are going in the same direction of the ridges on the horn. It might even help if you turn your painting upside down.

STEP 11

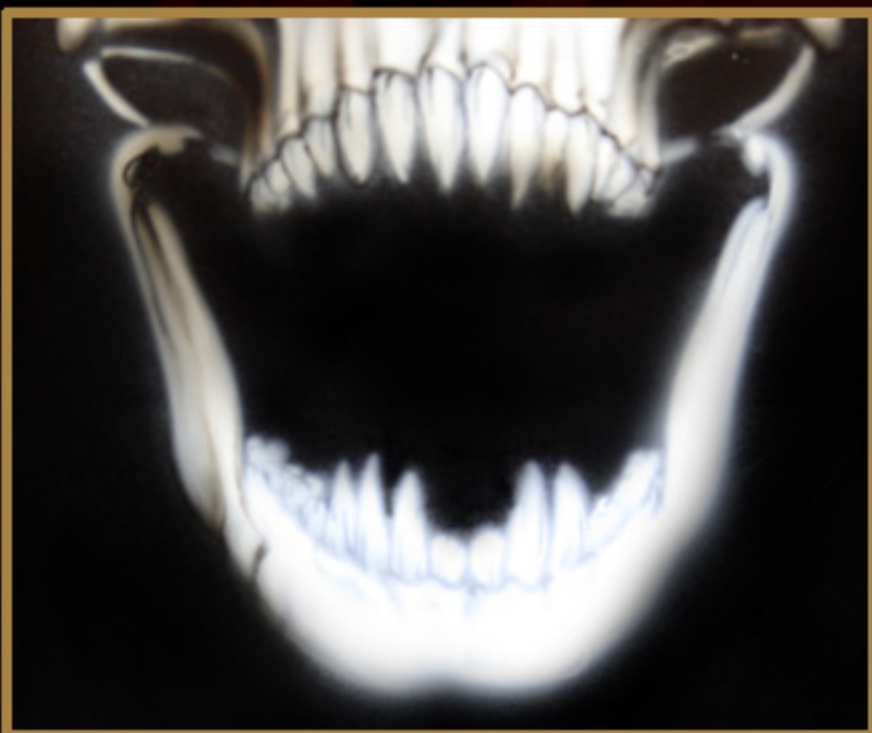


Moving over to the other side of the skull we begin to fill in some of the shadows with black. You can see how we faded in the shadows from top to bottom and bottom to top leaving the middle still pretty white. This helps create the round shape of the horns. We stepped backward here to show the shadows, you will want to paint all of the shadows and highlights at the same time.

STEP 12

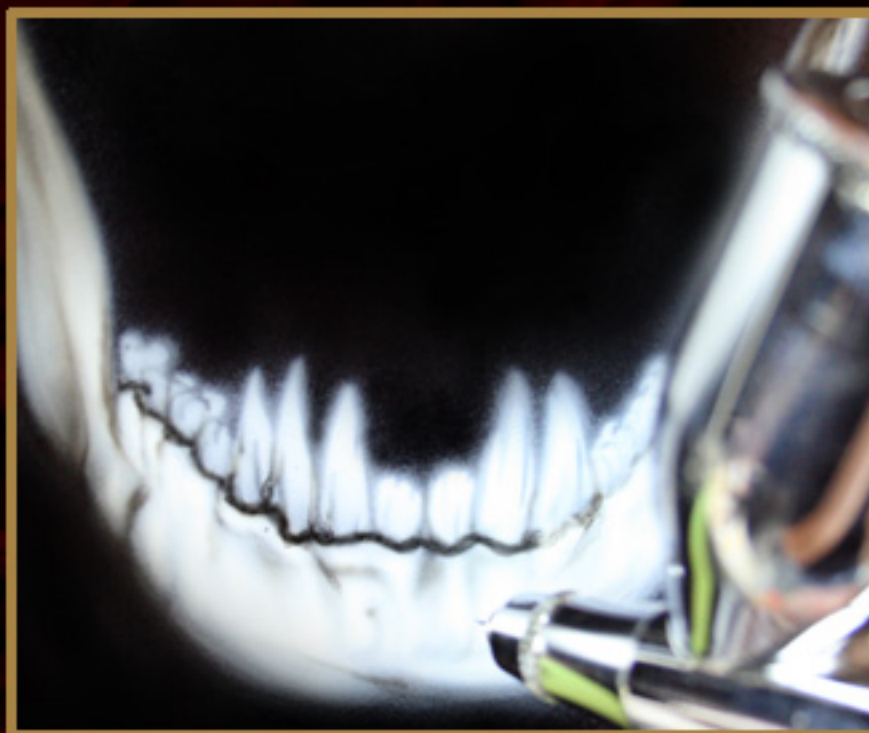


STEP 13



As we begin to fill in the lower jaw, we start to outline the teeth and gums. Its better to start light, adding in extra layers of black as needed. If you get a spot that is too dark you can bring it back out by shading white back into it.

STEP 14

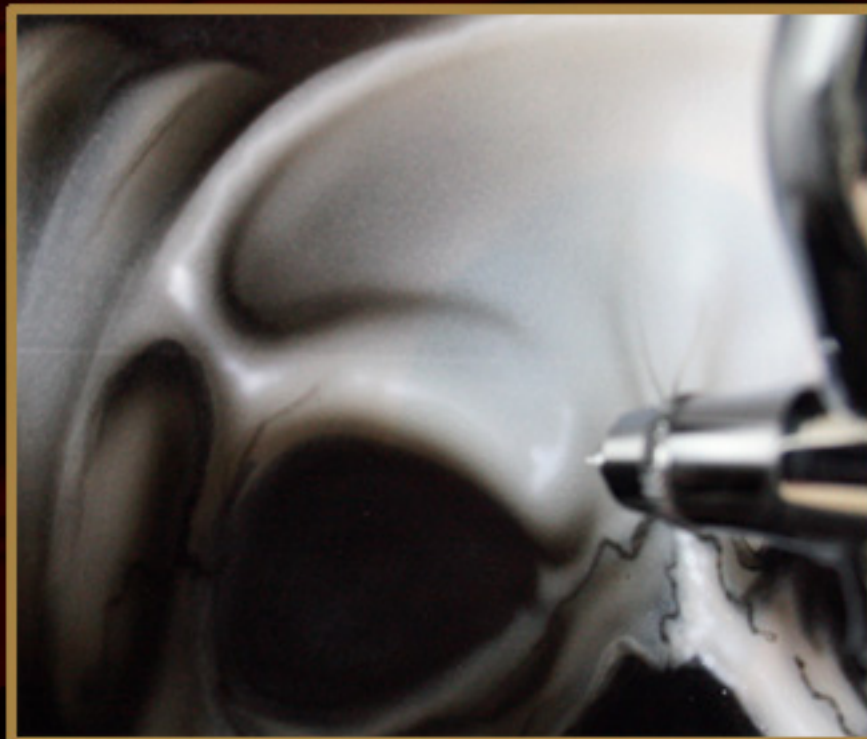


If you go to heavy with black, you can lay the stencil back over the top and lightly shoot some white over the top to bring out any highlighted areas.

STEP 15



STEP 16



In these last few steps we finish out the lower jaw and add some final highlights. Check out the overall pic below. Notice that the left side of the skull is shaded just a little darker than the right. The separation of dark and light is also more pronounced. This should happen on the side that is furthest away from your light source. Thanks for checking out this tutorial, give us a shout if you have any questions.

Keep on paintin!

Final



**PRINTER
FRIENDLY**



AirSick
SKULL 15



PAINT BY
SEAN CAHILL

STEP 1



Hi Everyone, welcome to another AirSick How-To. For this tutorial we will be using the Skull 15 stencil. We start by prepping a black panel and taping our stencil down. The first thing we need to do is establish a base for our skull. To do this we give our stencil a light dusting of white. You don't want to fill it in solid, just enough so you can see the outlines. Check out the result in step 2 after we remove the stencil. With our white we start to fill in some of the high-light areas.

STEP 2



STEP 3



STEP 4



In steps 3 and 4, we begin to fill out the skull with white. Look just above the teeth in step 3, you can see the ridges start to take shape just by adding more white. If the initial layer of white is too thick you won't be able to get this effect without black. Now that we have our first layer of highlights we move onto black to begin adding some shadows and details. Using our detail gun, we add some small cracks around the nose and eyes. In the next step we start to add some shadows under the eyes, and around the skull.

STEP 5



STEP 6



STEP 7



So now we have our first layers of white and black down. The skull is starting to look pretty good but it still needs some more work. We need a few more layers to blend everything together.

STEP 8



Adding in some more black helps to define some of the cracks and different shapes in our skull. We can really push some of the cavities and cracks by going a little heavier with the black at this stage. However, we still need to add some more white.

STEP 9



Here we begin to add some of our final highlights. These final touches are small, lightly sprayed strokes usually in the center of a highlighted area. For example on the very tips of the brow.

STEP 10



The same thing continues here, adding the highlights to the horns. Make sure that your brush strokes are going in the same direction of the ridges on the horn. It might even help if you turn your painting upside down.

STEP 11

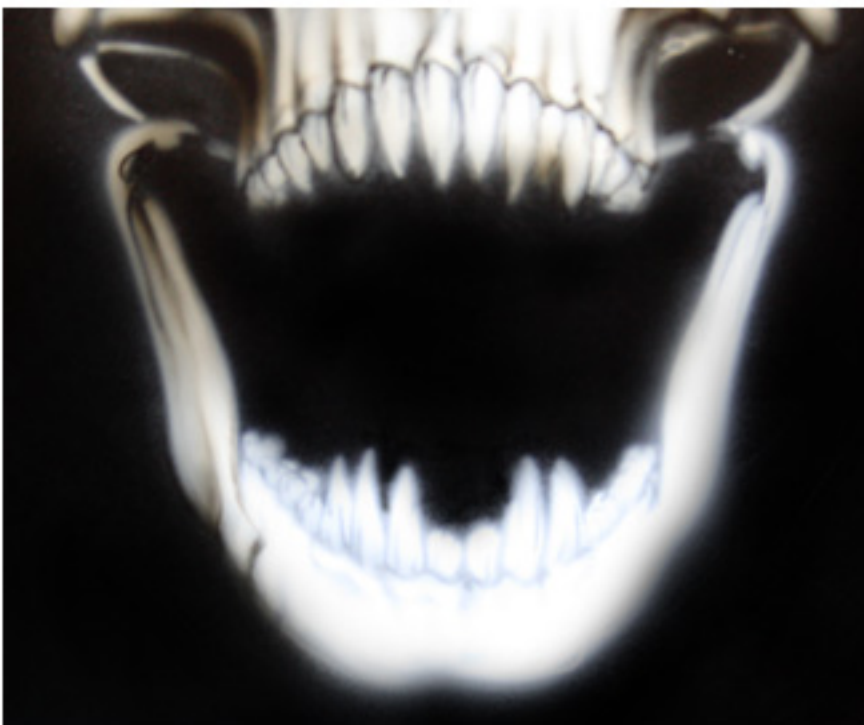


Moving over to the other side of the skull we begin to fill in some of the shadows with black. You can see how we faded in the shadows from top to bottom and bottom to top leaving the middle still pretty white. This helps create the round shape of the horns. We stepped backward here to show the shadows, you will want to paint all of the shadows and highlights at the same time.

STEP 12



STEP 13



As we begin to fill in the lower jaw, we start to outline the teeth and gums. Its better to start light, adding in extra layers of black as needed. If you get a spot that is too dark you can bring it back out by shading white back into it.

STEP 14

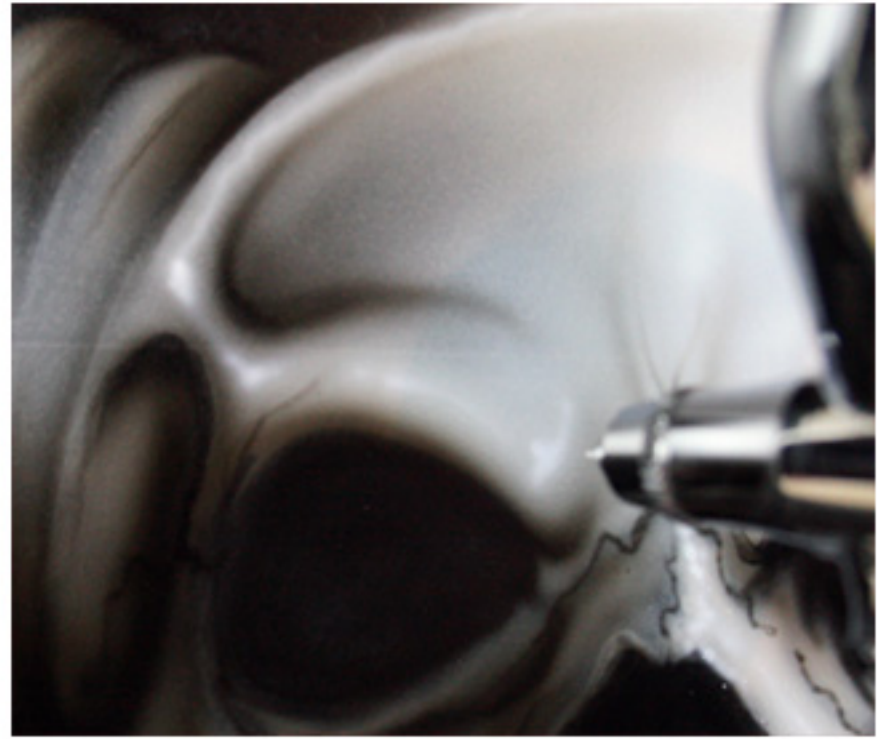


If you go to heavy with black, you can lay the stencil back over the top and lightly shoot some white over the top to bring out any highlighted areas.

STEP 15



STEP 16



In these last few steps we finish out the lower jaw and add some final highlights. Check out the overall pic below. Notice that the left side of the skull is shaded just a little darker than the right. The separation of dark and light is also more pronounced. This should happen on the side that is furthest away from your light source. Thanks for checking out this tutorial, give us a shout if you have any questions.

Keep on paintin!

Final

